



NOLTAnet App

Configuration of inputs and error texts via the NOLTAnet app

Configuring the inputs

After adding a SmartBox on the user account, the device inputs are not yet configured and are therefore not shown in the device details:

Device details

SmartBox NOLTA

NOLTA intern

✎

last update 09.12.2020 16:43:30

Operating state	●	ON
State	●	OK
Connection	●	Online

🌐 **Industriestraße 8, 35091 Cölbe**

🕒 229,3 h

i SmartBox 82 0312

|||| N423452

🔑 license until 25.12.2020

To configure the inputs, click on the red edit button at the top right in the device details and the view jumps to the „Error texts & device settings“ field. After clicking on the red menu button at the top right in the „Error texts & device settings“ field, the following view appears:

Error texts & device settings

☰

Error texts
edit

+

name	source	choose ▼
------	--------	--

The inputs can be added or configured using the + button. After clicking the + button, the following view appears:

Error texts & device settings

☰

Error texts
Anpassen

+

name	source	choose ▼
------	--------	--

text ON text OFF

error triggering

save

First the source has to be selected - for example Digital In 1. Then the fields "Name", "Text ON" (display text with ON-signal at the input) and "Text OFF" (display text with OFF-signal at the input) can be named individually. The error triggering can be individually assigned to the input signal states, to do this simply click under the field for the respective signal state and the error triggering is shifted there.

Error texts & device settings ☰

Error texts edit

name edit delete

name source Digital IN 1 ▼

text on text off

error triggering

save

After completing the configuration, click on „save“. The inputs created are then displayed in the device details:

View with no pending errors:

Device details

SmartBox NOLTA ✎

NOLTA intern

last update 21.12.2020 09:53:29

Operating state	●	ON
State	●	OK
Connection	●	Online
Location	Industriestraße 8, 35091 Cölbe	
Runtime	229,3 h	
Motor protection	●	OK
ID	SmartBox 82 0312	
Barcode	N423452	
License	license until 25.12.2020	

View with pending error:

Device details

SmartBox NOLTA ✎

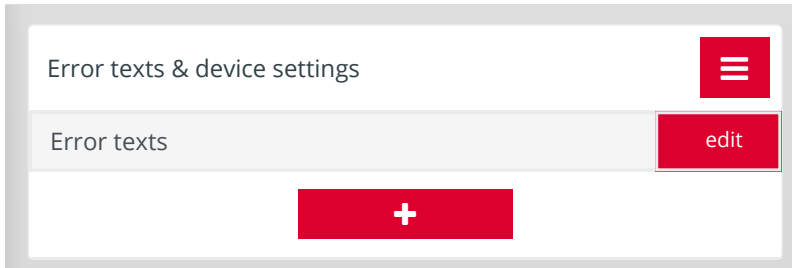
NOLTA intern

last update 09.12.2020 16:43:30

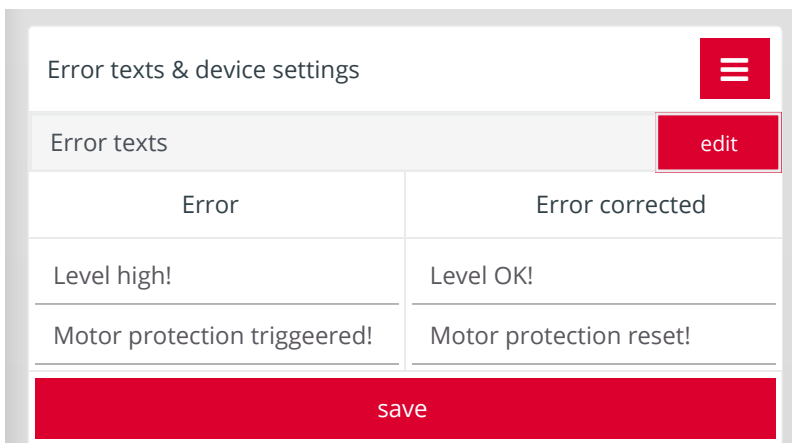
Operating state	●	ON
State	●	Error
Connection	●	Online
Location	Industriestraße 8, 35091 Cölbe	
Runtime	229,3 h	
Motor protection	●	Error
ID	SmartBox 82 0312	
Barcode	N423452	
License	license until 25.12.2020	

Configuring the error texts

To configure the error texts in the „Error texts & device settings“ view, click on the „edit“ button:



The following submenu appears, via which the texts for the push notifications can be edited, which are sent to the users of the device when an error occurs or after the error has been corrected:



When the menu is opened for the first time, standard texts are entered for the messages (level and motor protection); these can be individually renamed by clicking in the respective field. After adjusting the texts, click on „save“ and the entered texts will be sent accordingly with the next push notification.